

The background of the slide features a faint, light-colored grid pattern that resembles a globe or a technical drawing. The grid consists of concentric circles and radial lines, creating a sense of depth and structure. The overall color scheme is a dark, muted grey, which makes the white text stand out prominently.

# Alaska Region Organization and Authorization Processes

Jeff Walker  
Regional Supervisor,  
Field Operations  
Minerals Management Service  
Alaska Region

Arctic Technologies Workshop  
October 13-15, 2009

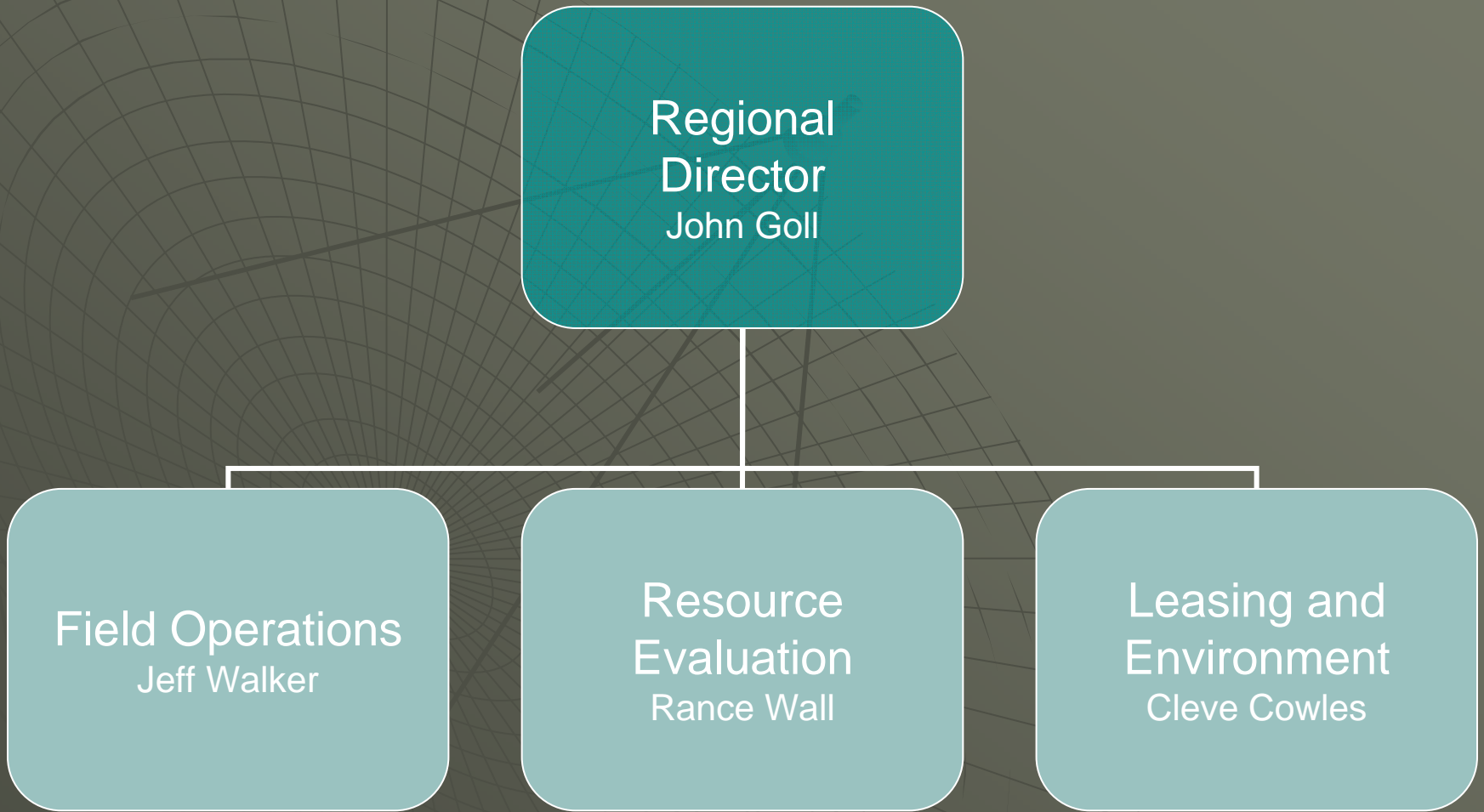
# Who We Are

Regional  
Director  
John Goll

Field Operations  
Jeff Walker

Resource  
Evaluation  
Rance Wall

Leasing and  
Environment  
Cleve Cowles



# Who We Are

Regional  
Director  
John Goll

Field Operations  
Jeff Walker

Resource  
Evaluation  
Rance Wall

Leasing and  
Environment  
Cleve Cowles

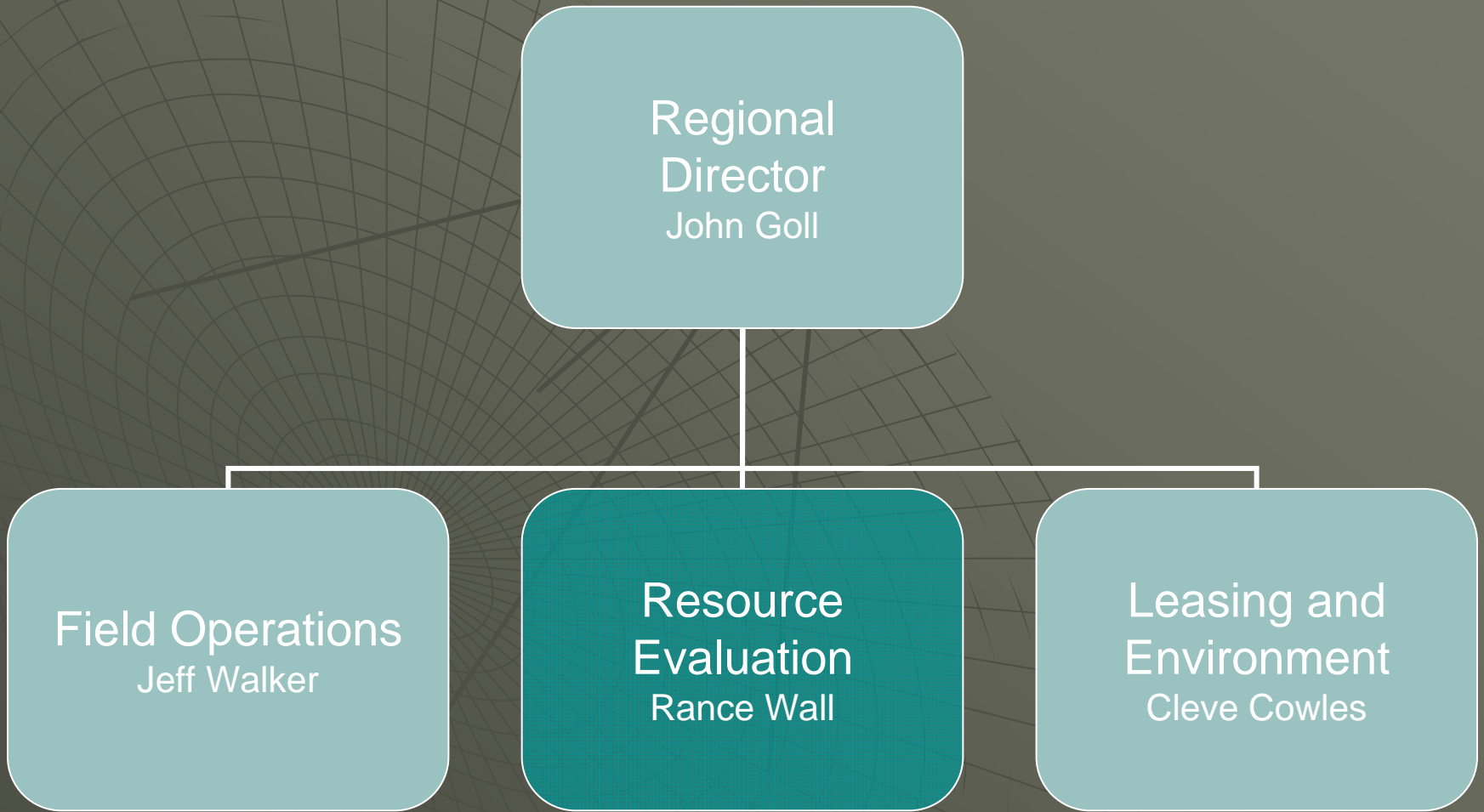
# Who We Are

Regional  
Director  
John Goll

Field Operations  
Jeff Walker

Resource  
Evaluation  
Rance Wall

Leasing and  
Environment  
Cleve Cowles



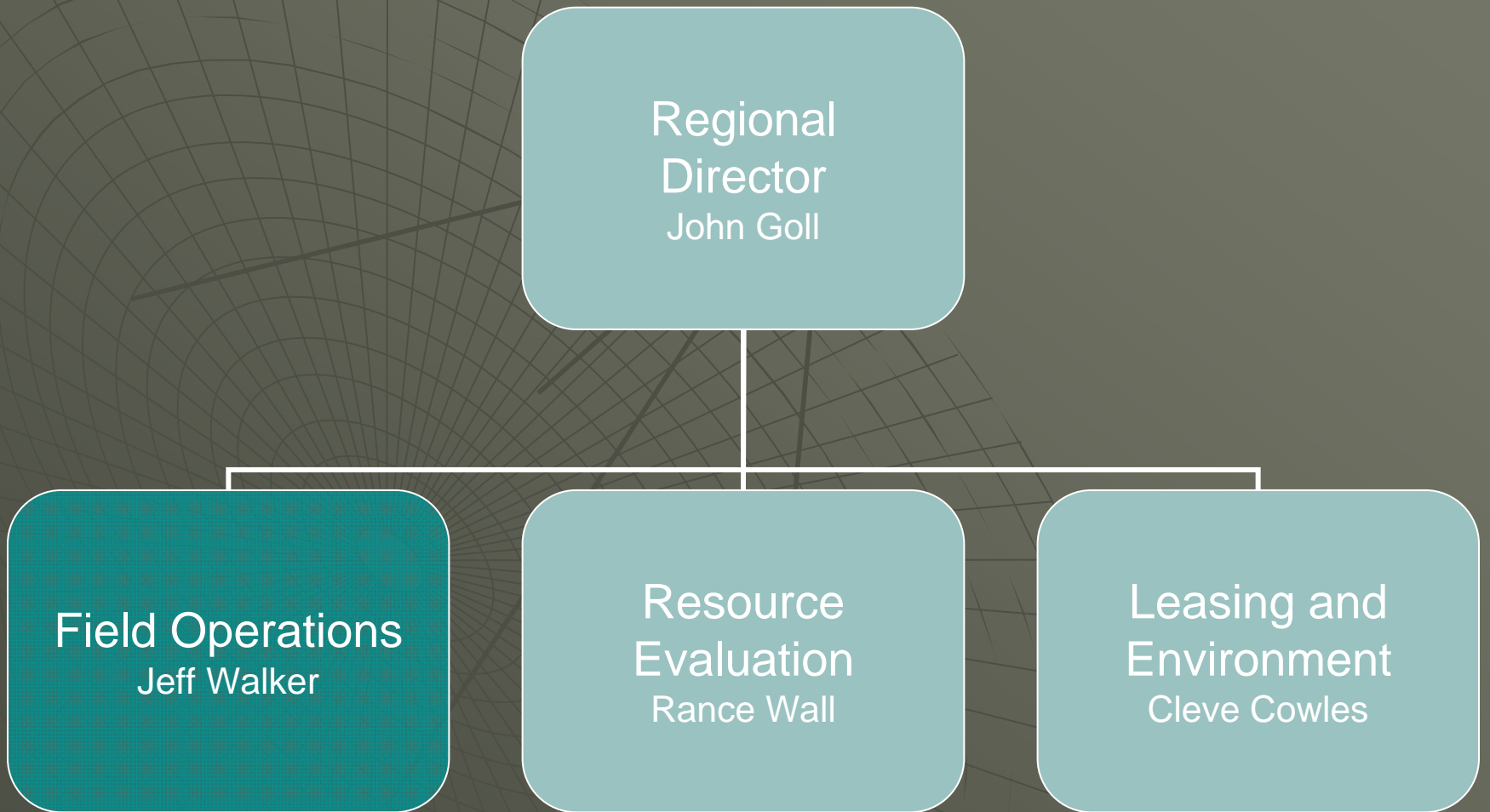
# Who We Are

Regional  
Director  
John Goll

Field Operations  
Jeff Walker

Resource  
Evaluation  
Rance Wall

Leasing and  
Environment  
Cleve Cowles



# Field Operations

Safety

Technology

Pollution Prevention

# Little of This, Little of That



- ◆ 2 exploration wells per year
- ◆ 1 producing development project
- ◆ 1 pending development project

# Lots and Lots of Rules

## 30 CFR 250

Subpart B: Plans and Information

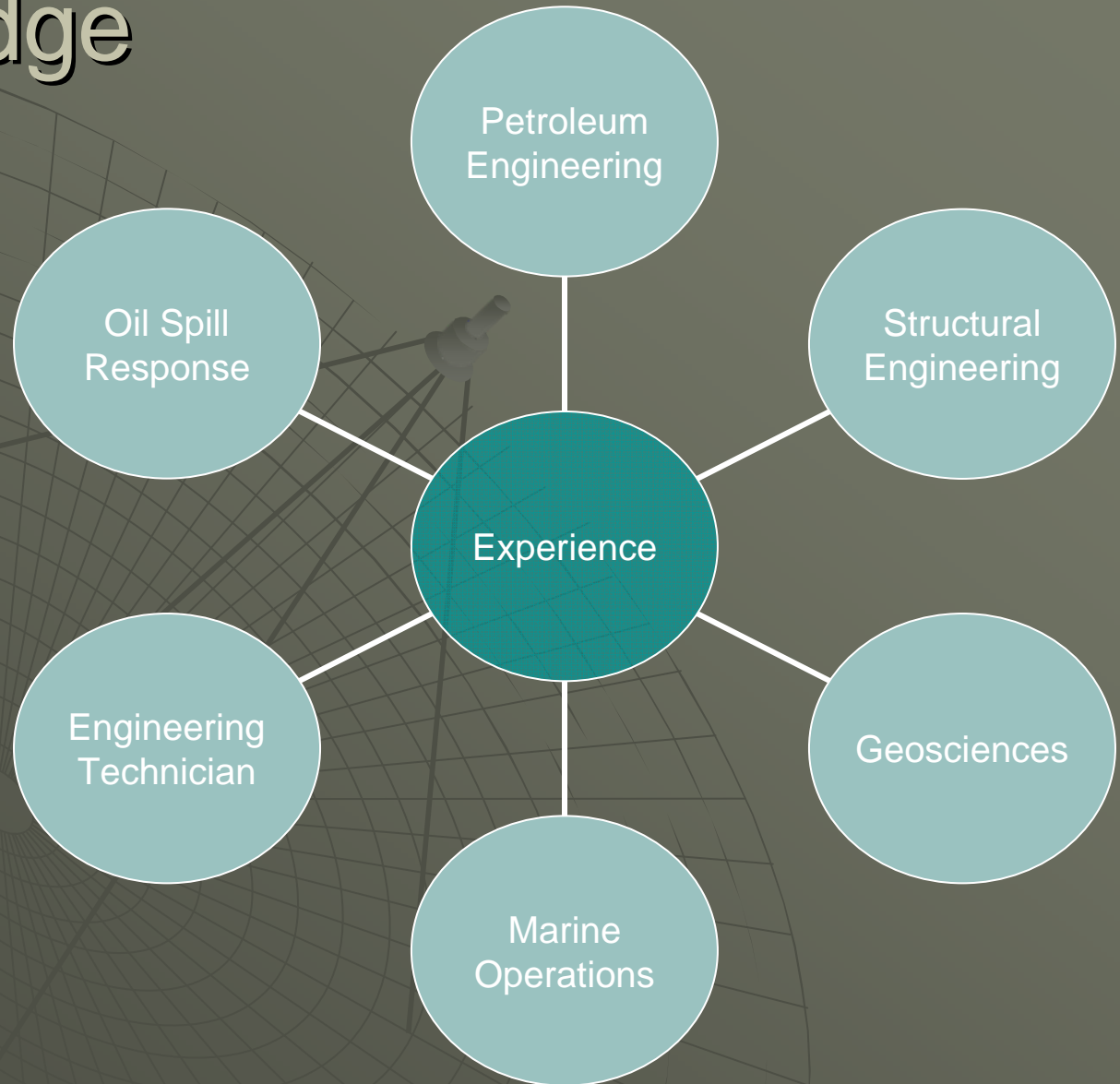
Subpart C: Pollution Prevention

Subpart D: Oil and Gas Drilling Operations

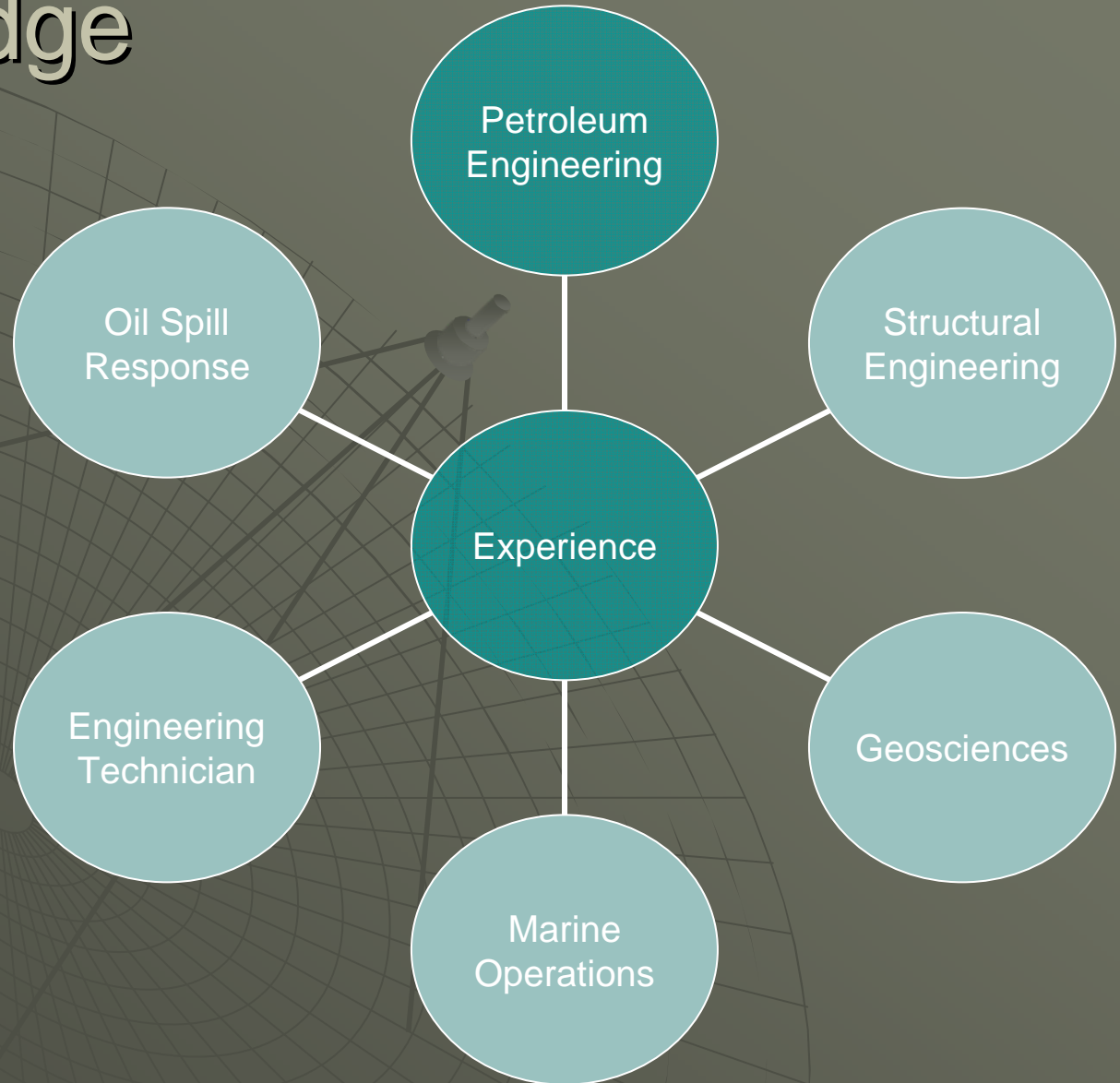
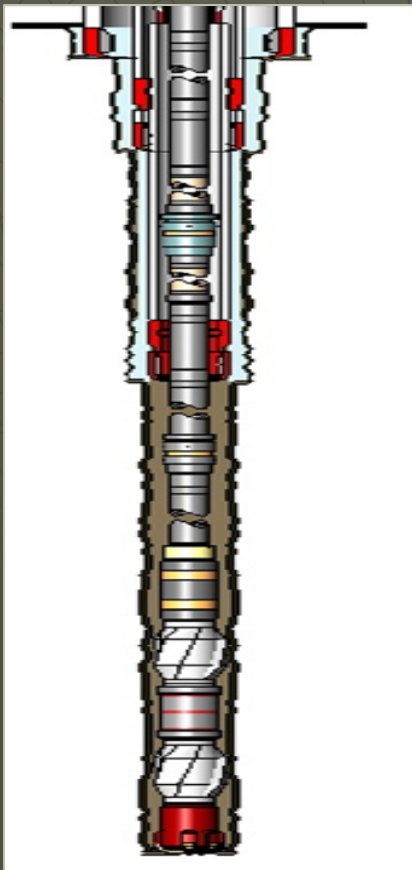
Subpart I: Platforms and Structures

Subpart O: Well Control and Production Safety Training

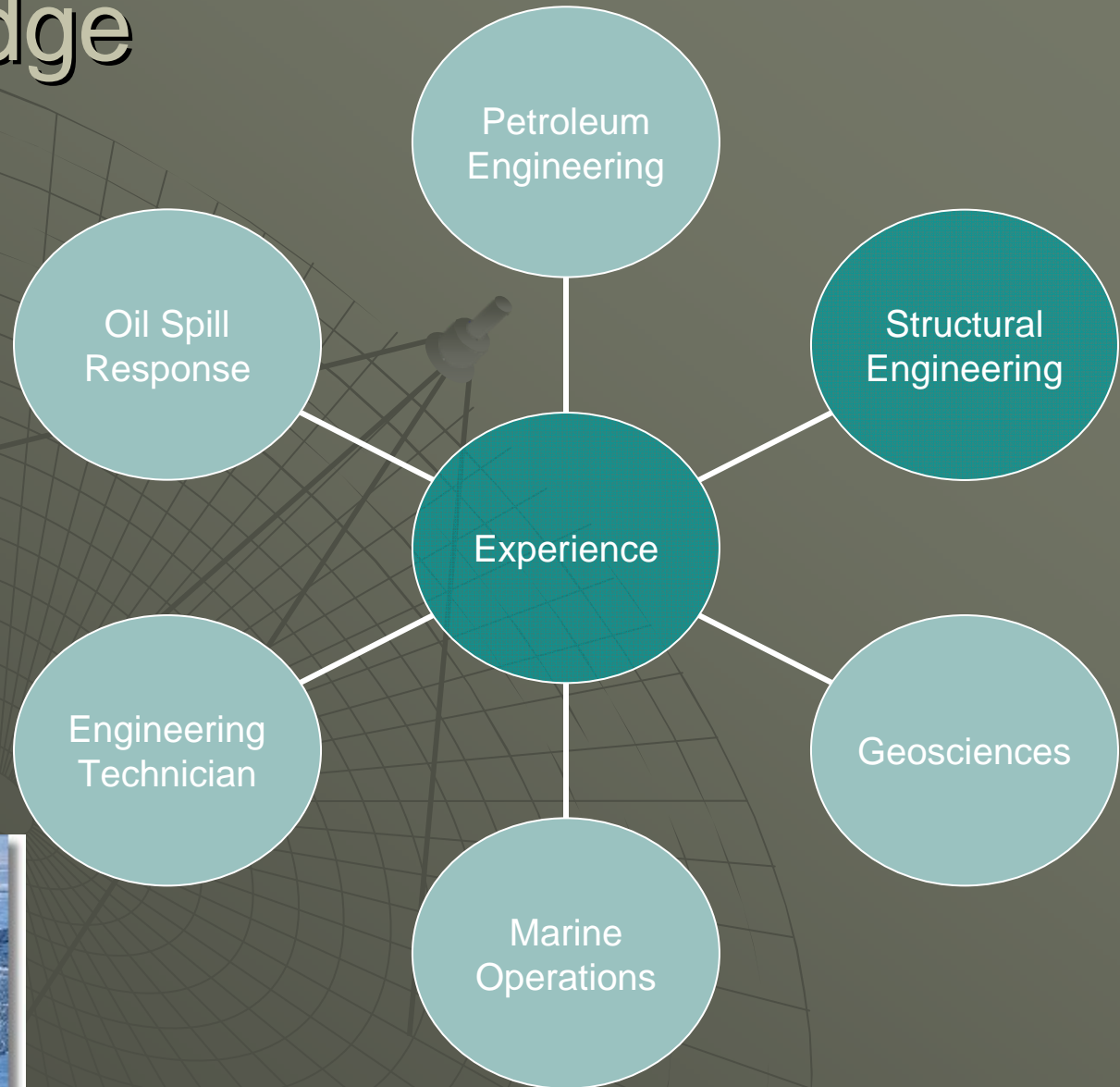
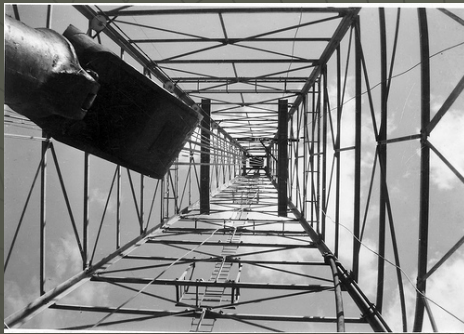
# Knowledge and Skills



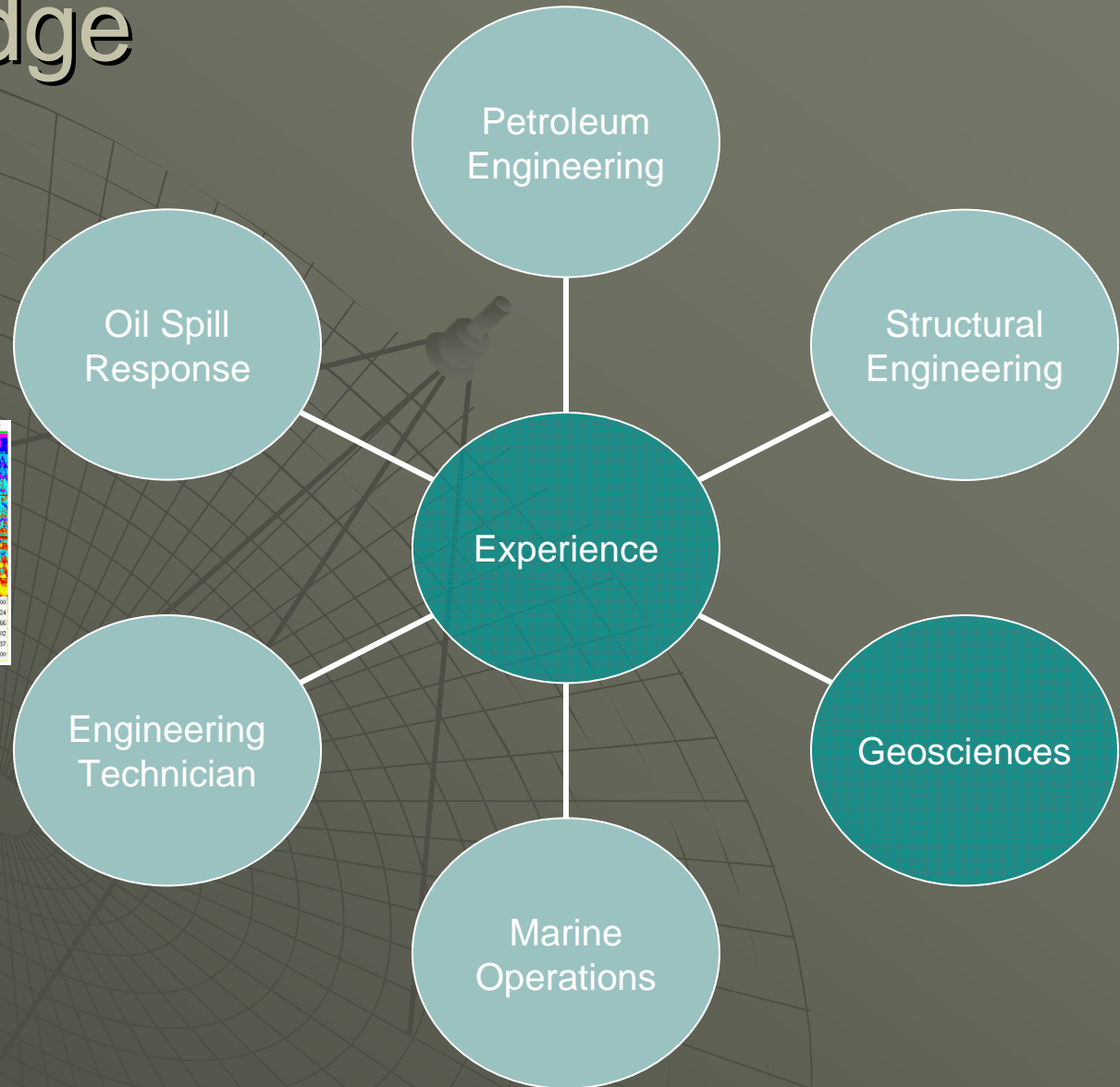
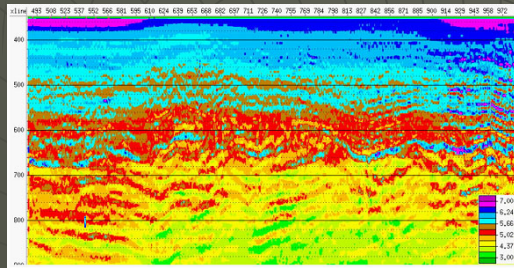
# Knowledge and Skills



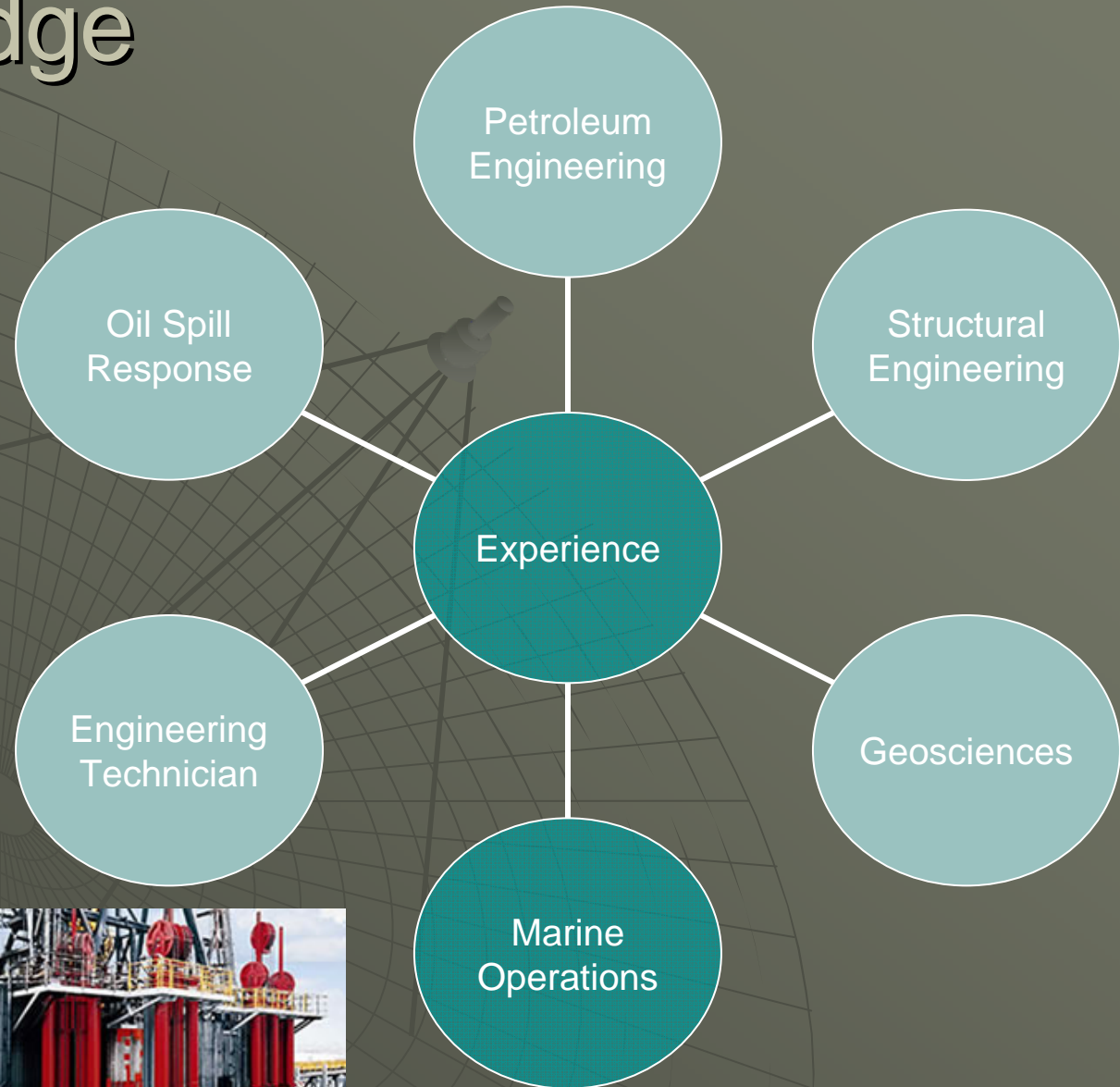
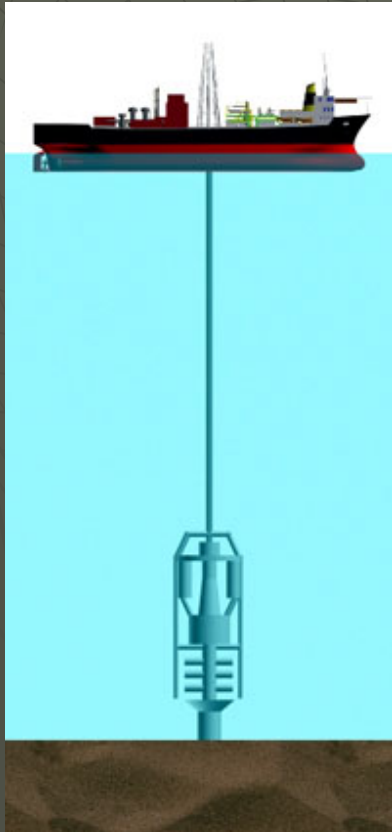
# Knowledge and Skills



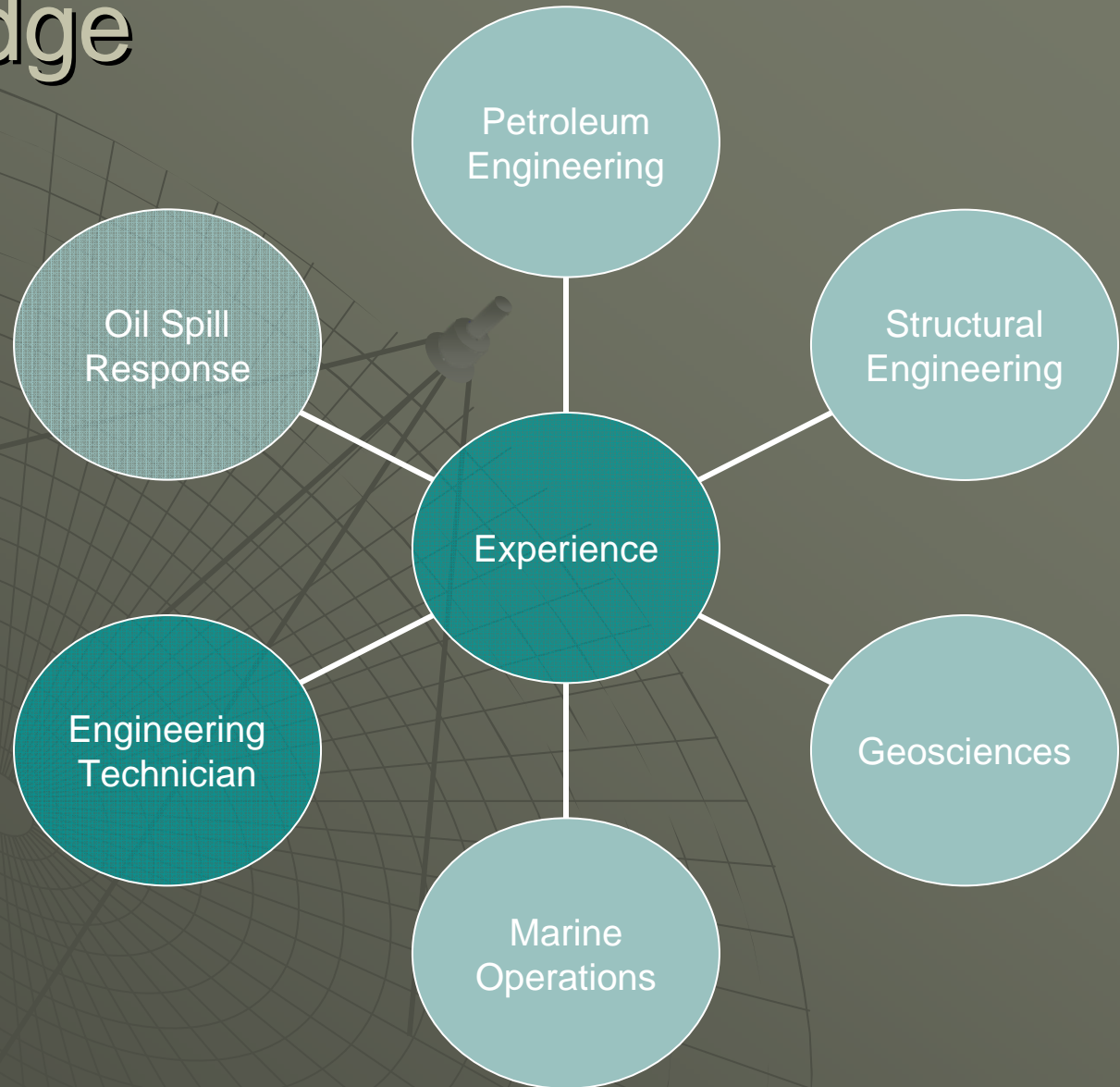
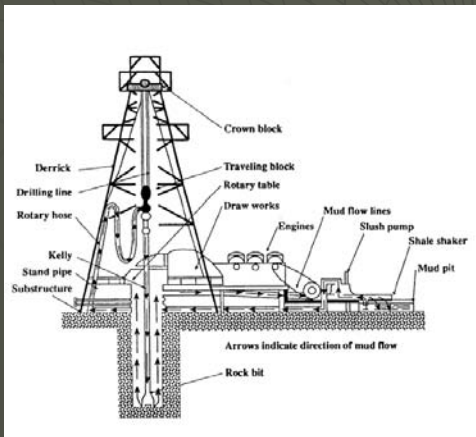
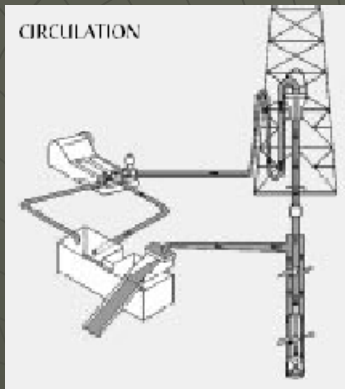
# Knowledge and Skills



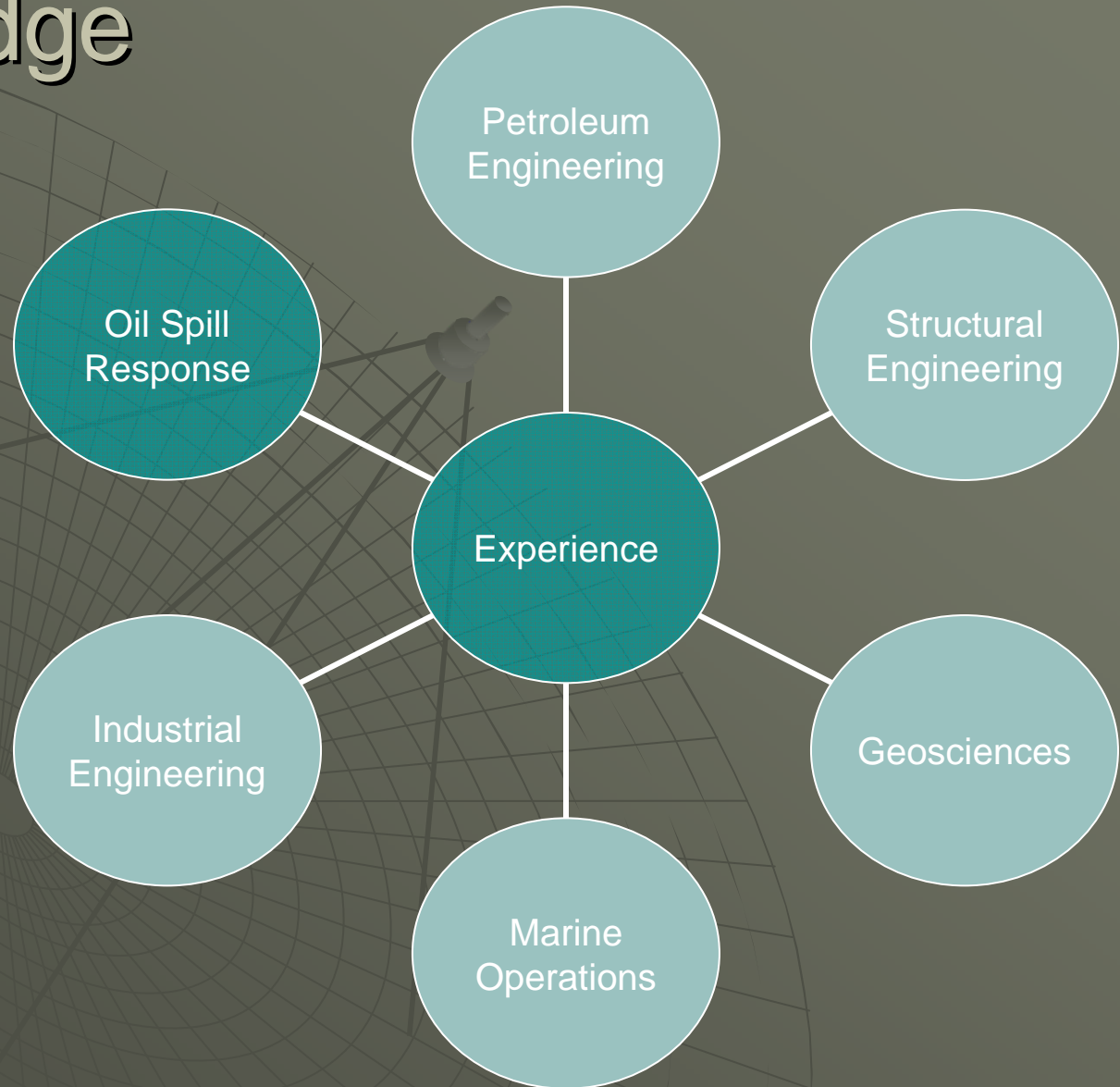
# Knowledge and Skills



# Knowledge and Skills



# Knowledge and Skills

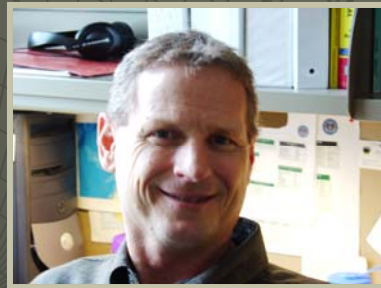


# Organization Optimization

- ◆ Field Operations
  - 4 Engineers
  - Geologist
  - Industrial Specialist
  - Oil Spill Response Manager
  - Project Manager
  - Secretary

# Real People, Real Experience

>100 Years of Experience



# Organization Optimization

## ◆ Field Operations

- 4 Petroleum Engineers
- Geologist
- Industrial Specialist
- Oil Spill Response Manager
- Project Manager
- Secretary

## ◆ Borrowed Resources

- Geophysicists
- Structural Engineering
- Marine Operations

# Networking



We have people

# Networking



We have people

GOM Region

Pacific Region

Headquarters



# We Are Not Alone



# We Are Not Alone

- US Coast Guard
- EPA
- State of Alaska
- Local Governments
- Universities
- Trade Groups
- International Regulators Forum

# National Program, Alaska Flavor



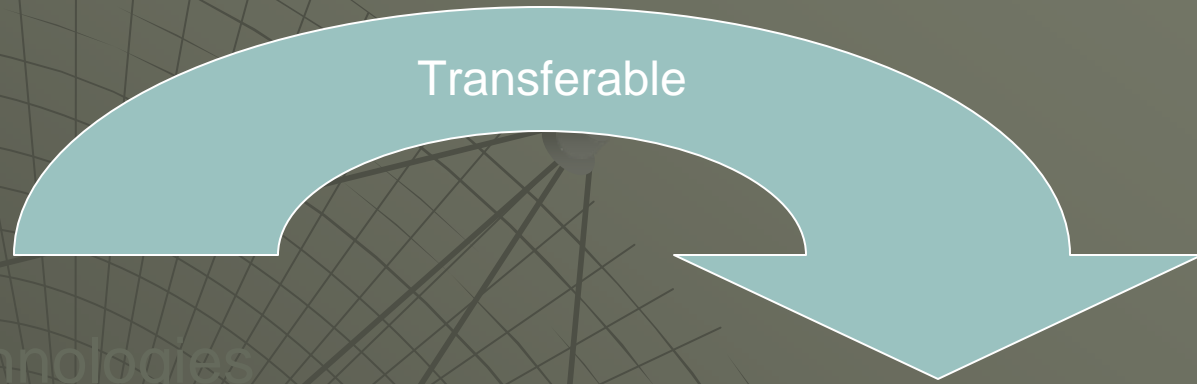
Drilling technologies

Drilling practices

Research and Development

Regulatory Standards

# National Program, Alaska Flavor



Drilling technologies

Drilling practices

Research and Development

Regulatory Standards

Subfreezing temperatures

Darkness

Ice

# Differences, Similarities

## GOM

- Hurricanes
- Remote

## Alaska

- Sea ice
- Remote

Conditions may be different.

# Differences, Similarities

## GOM

- Hurricanes
- Remote

## Alaska

- Sea ice
- Remote

Solutions can be shared.

# Step at a Time

18 - 50 ft.

50 - 80 ft.

80 - 180 ft.



1981  
Gravel  
Island  
18 ft.

1984  
CIDS  
49 ft.

1986  
Ice  
Island  
25 ft.

1986  
SSDC  
60 ft.

1985  
Explorer II  
Drillship  
103 ft.

1988  
Kulluk  
167 ft.

# Little Things, Big Benefits

Top drive  
MWD

Coiled Tubing

UAS

ERD

Information  
exchange and  
education among  
industry, regulators  
and  
stakeholders

# Little Things, Big Benefits

Top drive  
MWD

Coiled Tubing  
ERD

Information  
exchange and  
education among  
industry, regulators  
and  
stakeholders

# Little Things, Big Benefits

Top drive  
MWD

Coiled Tubing  
ERD

Information  
exchange and  
education among  
industry, regulators  
and  
stakeholders

# The Whole Tamale

The background of the slide features a large, faint image of a tamale. Overlaid on this is a grid pattern that resembles a map or a technical drawing. The grid consists of concentric circles and radial lines, creating a circular grid that covers most of the slide's area.

Exploration  
Plan

Application for  
Permit to Drill

# The Whole Tamale

The image features a large, stylized tamale in the background, rendered in a dark grey color with a fine grid pattern. The tamale is positioned diagonally, with its pointed end towards the bottom left. Two light blue rectangular boxes with dark grey text are placed on the tamale. The first box, on the left, contains the text 'Exploration Plan'. The second box, on the right, contains the text 'Application for Permit to Drill'. Below these boxes, the text 'Umbrella Planning Document' is centered under the first box, and 'Spud to Abandonment' is centered under the second box. At the bottom center of the tamale, the text 'Read the Fine Print' is written in a smaller font.

Exploration  
Plan

Application for  
Permit to Drill

Umbrella Planning  
Document

Spud to  
Abandonment

Read the Fine Print

# The Whole Tamale

Exploration  
Plan

Application for  
Permit to Drill

Shallow Hazards

Drilling Rig  
Approval

Welding and Hot  
Tapping Plans

Critical Operations  
Procedures

H2S Contingency  
Plans

MODU Quick  
Disconnect Plan

Drilling Unit  
Fit for Use

# Comprehensive Redundancy

~100-130 discrete technical elements reviewed before approving an exploratory drilling program.

~230 discrete elements of any exploratory drilling program are inspected by the MMS.

# Take Home Message

- ◆ Alaska Region Field Operations holds direct signature authority for post-lease plans and permits.
- ◆ Alaska Region Field Operations has access to diverse technical expertise.
- ◆ Alaska Region Field Operations administers a comprehensive safety and pollution prevention regulatory program.